



## Surgi-Max<sup>®</sup> Plus

The Trusted, Validated Energy Source of Choice

- Patented Radiowave Monopolar/Bipolar Technology
- Unparalleled Precision, Versatility, Safety
- Monopolar Incision, Dissection, Resection
- Non-Stick Bipolar Performance
- Improved Ventilation System

**SURGI-MAX<sup>®</sup>**  
plus

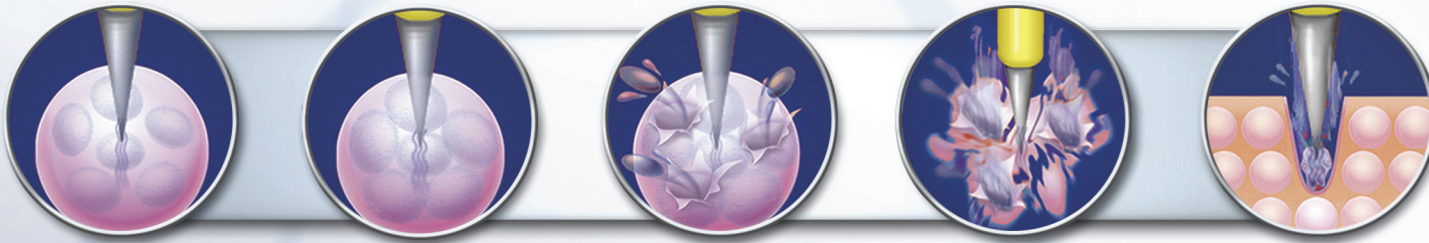


## Welcome to elliquence...

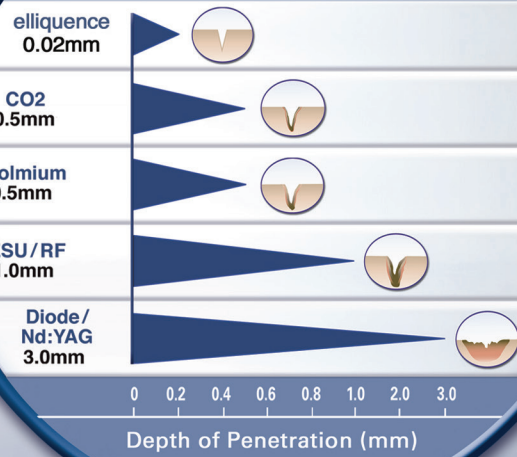
**elliquence** technology incorporates the patented Radiowave energy source of Ellman International (established in 1959) which utilizes high frequency, low temperature radiowaves to perform traditional scalpel, scissor, electrosurgical and laser assisted procedures. The cell-specific tissue effect affords unparalleled surgical precision while sparing healthy tissue. The low temperature emission results in non-adherent bipolar performance which minimizes tissue trauma and eliminates frequent cleaning and instrument irrigation.

### Technology Overview

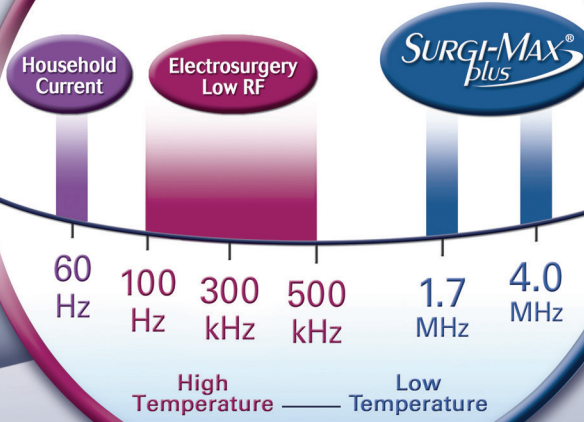
*Cell Specific Radiowave Absorption*



#### Absorption Comparison of Surgical Energy Sources



#### Electromagnetic Radiation Spectrum



elliquence®, LLC.  
2455 Grand Avenue, Baldwin, New York 11510 U.S.A.  
(516) 277-9000 • Fax: (516) 277-9001 • www.elliquence.com



© 2012